

Technical Data Sheet

Soft Annealed Steel Wire

- **Surface:** **Electrolytical galvanized, copper coated or bright**
- **Carbon Content:** C < 0,08% in order to meet the technical characteristics of the wire
- **Material:** 1.0304 C 9 D DIN EN 10016 - 2,
Higher-order qualities by request

Wire diameter mm	Tolerance +/- mm	Tensile strength N/mm ²	Tolerance N/mm ²	Yield point N/mm ²	Tolerance N/mm ²	Elongation %	Zinc coating g/m ²	Copper coating g/m ²
0,18 – 0,24	0,01	380	35	low	20	min. 15	min. 20	min. 3
0,25 – 0,40	0,015	380	35	low	20	min. 15	min. 20	min. 3
0,41 – 0,63	0,02	380	35	low	20	min. 20	min. 20	min. 3
0,63 – 1,00	0,02	380	35	low	20	min. 20	min. 25	min. 3
1,01 – 1,60	0,02	380	35	low	20	min. 20	min. 30	min. 3

The requirements for tensile are per lot of material

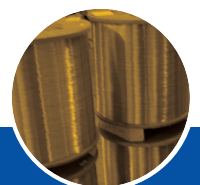
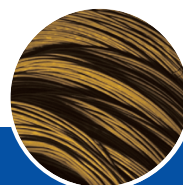
Roundness tolerance: 50% of diameter tolerance

Standard Spools:

DIN 100	DIN 250	MP 100
DIN 125	DIN 355	MP 500
DIN 160	DIN 400	RP 1000
DIN 200	BB 20	

Packaging: Spools are packed on paletts or in boxes and are well protected against damage and corrosion

Labeling: Customer´s adress, order no., wire diameter, nettweight, gross weight and no. of paletts



SBD

Shanghai Bao Zhang
ts

Spool type	Spool Sizes (mm)					Material	Netweight / Spool (kg)	Spools / Palet	Netweight / Palet (kg)
	D1	D2	D4	L1	L2				
DIN 100	100	62	16	100	80	ABS	1,70	600	1.020
DIN 125	125	90	20	120	100	ABS	4	256	1.025
DIN 160	160	100	22	160	128	ABS	6	108	650
DIN 200	200	125	23	200	160	ABS	15	75	1.125
DIN 250	250	160	30	190	160	ABS	20	48	960
DIN 355	355	225	35	200	160	ABS	50	12/18	600/900
DIN 400	400	200	34	220	180	ABS	90	6	480
BB 20	200	105	33	180	160	ABS	18	50	900
MP 100	355	215	127	345	245	ABS	90	6 / 9	540 / 810
BICO 100	355	215	127	345	245	ABS	90	6 / 9	540 / 810
MP 500	600	380	80	680	585	wood	500	-	-
RP 1000	1040	560	80	520	425	wood	1.000	-	-

Standard Palet sizes: 1.20m x 0.75m or 1.20 x 1.12m.

BICO 100

DIN 100 - MP 100

MP 500 / RP 1000

Coil Weight kg	Inner Coil Diameter mm	Outer Coil Diameter mm	Height mm
5,50	305	350	40
25	305	350	90
50	330	500	100
135	350	530	435
450	330	680	850
545	330	550	900
635	330	680	850
900	350	870	900
1000	600	900	1000

Coils

Outer Diameter: 53cm, Core Diameter: 30cm

Height: 70 cm or 75cm

Packing: 4 drums per pallet

Diameter: 0,45mm – 1,50mm

Length: 300mm – 550mm

Drums